

Curved

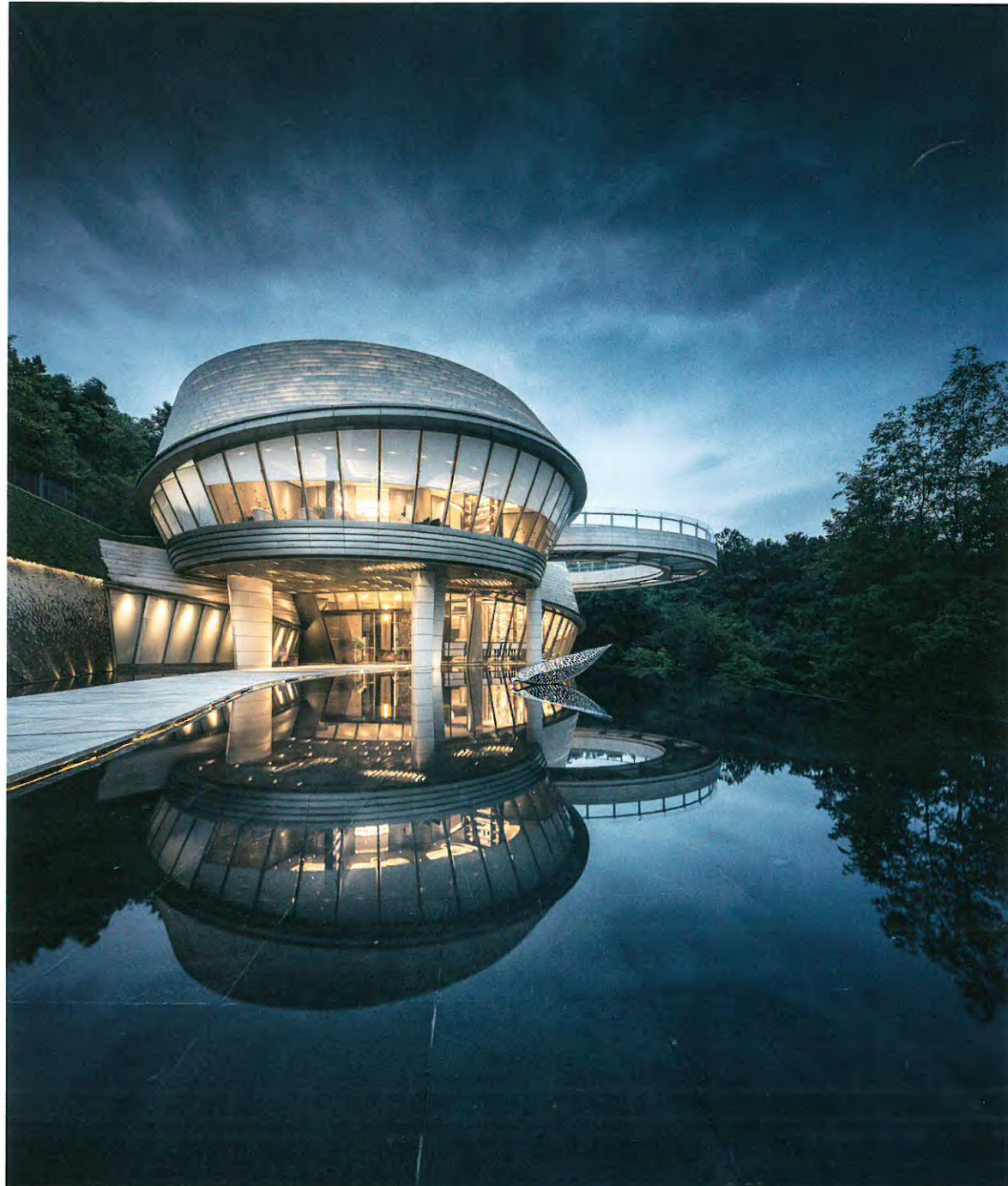
Bending architecture



Lannoo

The LOOP

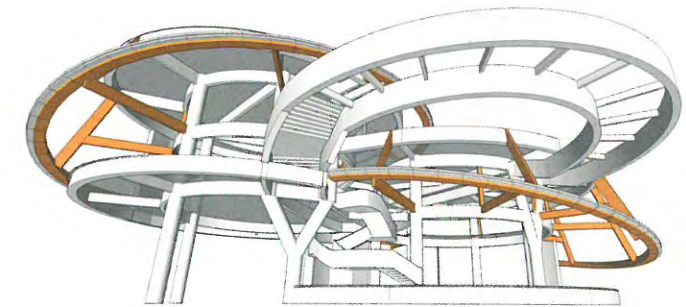
CHONGQING, CHINA
2018
LWK + PARTNERS



LWK + PARTNERS designed a sales gallery in the form of a low-density residential development made up of luxurious villas and houses. Located in the middle of stunning natural landscape of Zhaomu Mountain, it sits on the top of a wooded hill and has delightful round volumes encircled by ribbon-like structural elements. The latter has been named The Skywalk and is a crescent-shaped bridge with a glass floor that connects two showrooms and offers visitors unobstructed views of the valley. The undulating shape of the volumes, inspired by the location, is designed to merge the architecture into the surrounding environment.

What characterizes the LOOP is that aesthetic aspect of the design is followed by functionality. The construction process was not easy due to the limited accessibility of the site as well

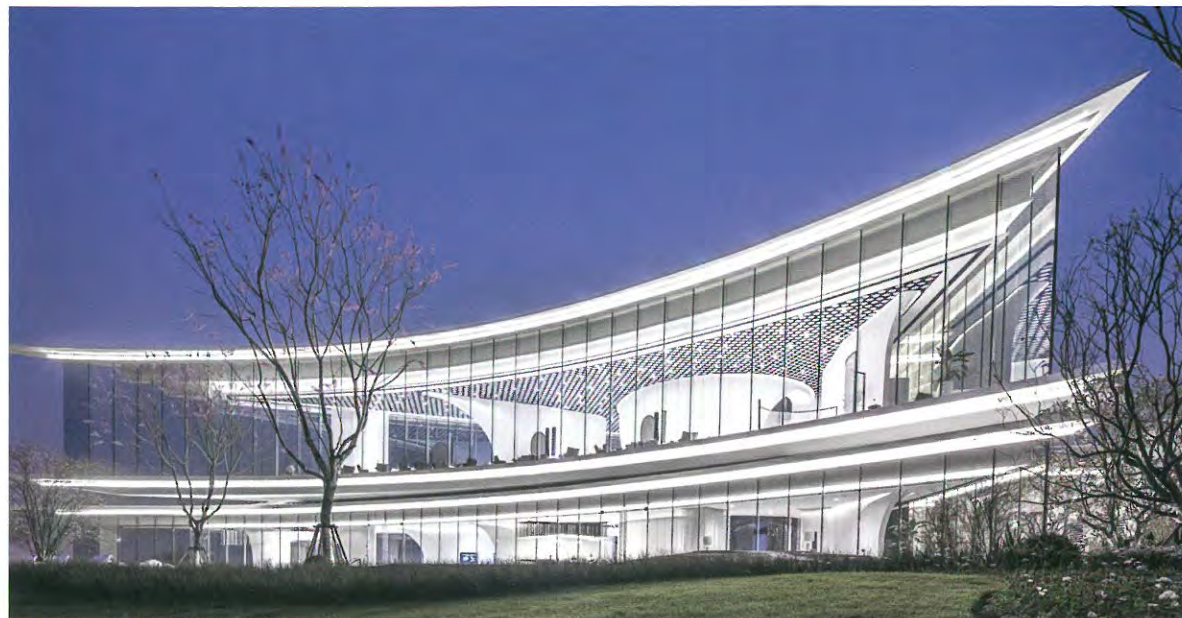
as steepness of the slopes. To realise this original vision on a challenging sloped plot, the structure used by the architects was made up of a steel frame that received an onion-ring-like, as they call it, cladding system of stone slabs. Arranged in a horizontal manner, the slabs are stacked vertically on different levels. The interplay between the frame, generous glazing and elegant cladding evolves across two similar yet not identical circular volumes that partly blend into one. The dynamism of the buildings' curving lines as well as the surrounding infrastructure adjust to the character of the terrain and both complement each other. In the outside space there is a water reservoir, the surface of which reflects the curving walls and creates additional visual effects, enhancing the experience.





Jiangshan Yun Chu - Legend Gallery

CHONGQING, CHINA
2019
LWK + PARTNERS



The sophisticated two-level arced volume, which is largely transparent, is an investigation of the relationship between nature and architecture. Sitting in a triangular plot on the Jialing River bank, the Chongqing Jiangshan Yun Chu – Legend Gallery benefits from the location at the highest point of the cliff. Visitors enjoy extensive vistas while experiencing inventive architecture. To envision it, the team of LWK + PARTNERS was inspired by the spectacle of nature at twilight.

“When scattering gold and crimson light painted the city, the mountains and river alone shone through,” reads the statement. Their project is a response to the context and surrounding nature as the building oscillates between transparency and reflection, interacting with the views and sun throughout

the day. To merge the building into the landscape the volume is embedded into the cliff’s rocks. The architects used more than 180 customised glass panes to create the structure that becomes indivisible from its environment. The sizeable transparent walls reveal the interiors, reducing the physical elements of the construction as much as possible. The landscape visible across the elevations becomes an organic part of the elevations. Additionally, the curving silhouette effectively fuses any distinction between architecture and nature. The second level has been rotated, in response to the contour of the cliff. This twist, especially given the scale and materials used, is quite spectacular. Visitors can truly experience a dynamic building made of air and light, yet admitting the panoramic views on the city from a 18-metre-long overhanging observation deck.



